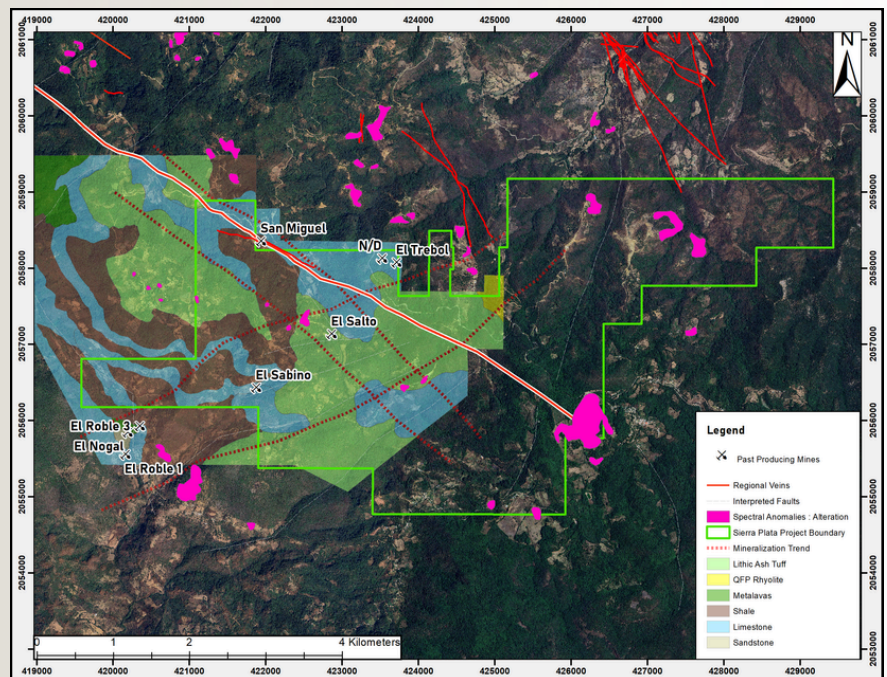




Sierra Plata - Taxco, Mexico

Deposit Type: Epithermal Silver–Gold–Antimony, significant historical production | **Size:** 2,200 ha
Stage: Pre-Drill / Advanced Targeting. | **Ownership:** 100% Option (IPT.V)

- Located in the **historic Zacualpan–Taxco District**, one of the most important sources of silver and gold in the Spanish Empire.
- Project area hosts **multiple past-producing silver-gold mines**, providing **clear evidence of a robust, repeatable mineralizing system** and **reducing geological risk**.
- Recent sampling of waste piles from the mines returned grades **to 3,932 g/t AgEq**
- Strong **silver and antimony prospectivity** associated with **structurally controlled epithermal vein systems**.
- **Numerous productive trends and fault structures identified**. Mapping, geochemistry, geophysics, and drill permitting have been initiated.



- May 2026 the Company engaged *Sr. Carlos Cham Dominguez as Country Manager*. J2 Metals has since added *two full time geologists who are mapping and advancing targeting*.
- *Continually evaluating other high quality project opportunities in the region as well as throughout Mexico.*



GEOCHEMICAL ASSAY RESULTS - EL SABRINO & SAN MIGUEL MINE WASTE DUMPS

Sample ID	Location	Easting	Northing	Au (ppm)	Ag (ppm)	AuEq (ppm) ¹	AgEq (ppm) ²
K074324	San Miguel	421914	2058296	12.8	3100	60.49	3932.00
K074325	San Miguel	421914	2058296	4.32	1120	21.55	1400.80
K074318	El Sabrino	421842	2056396	0.905	878	14.41	936.83
K074319	El Sabrino	421842	2056396	0.381	512	8.26	536.77
K074320	El Sabrino	421842	2056396	0.525	633	10.26	667.13
K074321	El Sabrino	421842	2056396	0.246	394	6.31	409.99

¹ Gold Equivalent (AuEq) calculated via the formula: Au (g/t) + [Ag (g/t) / 65].

² Silver Equivalent (AgEq) calculated via the formula: Ag(ppm) + [Au (ppm) *65]

DUE DILIGENCE SAMPLING CONFIRMS HIGH-GRADE MINERALIZATION:

December 10, 2025 - Grab samples taken from quartz vein material of the historic El Sabino and San Miguel mine waste dumps **returned high-grade silver and gold values, confirming the strong precious-metal endowment of the Sierra Plata system.**

Best Result: Sample K074324 (San Miguel) - 3,100 g/t Ag + 12.8 g/t Au = **60.49 g/t AuEq and 3932 ppm AgEq**

Miniac Project - Abitibi, Quebec

Deposit Type: Polymetallic VMS / Intrusion-related Gold, Copper, Zinc

Stage: Phase-II Drilling | **Ownership:** 100% J2 Metals

- Historic drilling: up to 4.8 g/t Au, 6.9% Zn; 1.05 g/t Au over 4.65 m (DDH DV-80).
- Phase 1 - 3D IP survey completed recently ahead of planned Phase II drilling. This was a ~40 km IP survey over priority targets identified by ALS Goldspot (2023), integrating structural interpretation, magnetic inversion, and historical VTEM data to define drill targets at conductor-structure intersections.
- Past drilling is interpreted to have intersected VMS-style mineralization, including pyrrhotite (DDH DU-119) and quartz-biotite-garnet alteration (DDH DU-80), consistent with distal alteration at the analogue LaRonde deposit.
- Exploration to date has identified a ~7 km conductive horizon that remains largely untested.
- Next step is Phase 2 drilling, planned as a ~3,000 m to 3,500 m drill program.

Napoleon Project - Tintina Belt, Alaska, USA

Deposit Type: Orogenic / Intrusion-related Gold

Size: 5,925 ha | **Stage:** Phase-II Drilling | **Ownership:** 100% J2 Metals

- Acquired from Kenorland Minerals, who were technical advisors through Phase I drilling.
- High-grade surface sample: 593 g/t Au. Historic drilling by Teck and Kennecott intersected up to 8.9 g/t Au over 3m (DDH NP-2) and 74m of 0.9g/t Au (DDH NP-10).
- Recent geophysical surveys have defined new high-priority drill targets. Ready for Phase 2 discovery drilling.

For more information:

Thomas Lamb, CEO

Phone: +1 604 418 2877

Email: tlamb@j2metals.ca

Graham Giles, VP Exploration

Phone: +1 778 879 9751

Email: ggiles@j2metals.ca

www.j2metals.ca

Capitalization - *As of May 6, 2026

Common shares issued and outstanding	43,384,721
Warrants	11,321,663
Stock Options	1,682,573
Current Fully-Diluted	56,388,957