

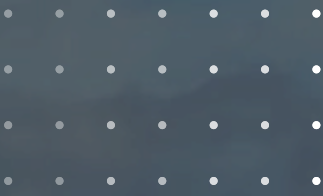


# J2 METALS INC.

SILVER-ANTIMONY IN MEXICO

GOLD IN THE ABITIBI GREENSTONE BELT AND ALASKA

Corporate Presentation – May 2026



TSXV: JTWO | FRA:OO1

[www.j2metals.ca](http://www.j2metals.ca)



# DISCLAIMER

## Qualified Person

Graham Giles (P.Geo, BSc, MSc), a “Qualified Person” for the purpose of National Instrument 43-101, has reviewed and approved the scientific and technical information included in this presentation.

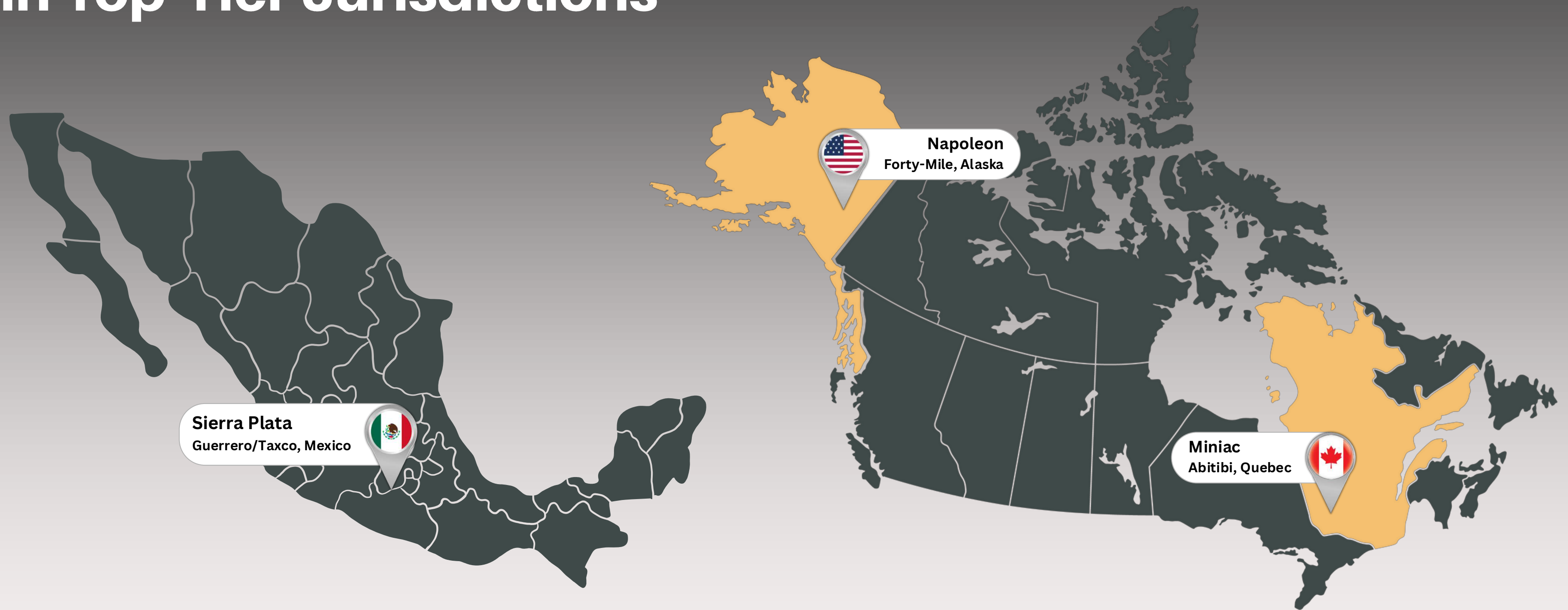
## Securities Laws

These Documents are not, and under no circumstances are to be construed as, a prospectus or an advertisement or a public offering of any securities of the Company in any province or territory of Canada or elsewhere and do not constitute an offer for the sale of any securities of the Company. No securities regulatory authority in Canada, the United States of America or any other jurisdiction has reviewed or in any way passed upon the Documents or the merits of any securities of the Company, and any representation to the contrary is an offence.

## Information Provided in the Document and Forward Looking Statements

Mineralization hosted on adjacent or nearby properties is not necessarily indicative of mineralization hosted on the Company’s properties. We make no representation or warranty as to the accuracy or completeness of any information included in the Documents. The information is considered current but will not be updated at any time thereafter. Certain statements in the Documents are “forward looking statements”. Any statements that express or involve discussions with respect to predictions, expectations, beliefs, plans, projections (financial or otherwise), objectives, assumptions or future events or performance are not statements of historical fact and may be forward-looking statements. Forward-looking statements are based on expectations, estimates and projections at the time the statements are made that involve a number of risks and uncertainties which would cause actual results or events to differ materially from those presently anticipated. These forward-looking statements reflect our current beliefs with respect to future events and are based on information currently available to us. Forward-looking statements involve significant known and unknown risks, uncertainties and assumptions, and many factors could cause actual results, performance or achievements to be materially different from any future results, performance or achievements that may be expressed or implied by such forward-looking statements. You should not place undue reliance on the forward-looking statements. These forward-looking statements are made as of the date of this document and we do not intend to, and we do not assume any obligation to, update or revise these forward-looking statements to reflect new information, events, results or circumstances or otherwise after the date on which such statement is made as to reflect the occurrence of unanticipated events, except as required by law.

# Exploring for Silver-Antimony and Gold in Top-Tier Jurisdictions



**01** Sierra Plata - Mexico

**02** Miniac - Quebec

**03** Napoleon - Alaska

# Milestones and Upcoming Catalysts



## Sierra Plata Project - Zacualplan/Taxco, Mexico

- **May 4, 2026** - Country Manager engaged Sr. Carlos Cham Dominguez.
- **Mapping, geochemistry, geophysics, LiDAR at Sierra Plata has commenced.**
- *Sampling has commenced: grades up to 3,100 g/t Ag + 12.8 g/t Au (AgEq = 3932ppm).*
  - **News February 24, 2026** - J2 Metals Inc. Reports High-Grade Silver and Gold Results from Sierra Plata Site Visit.
- Will soon be commencing process to obtain final drill permits.
- Project wide geological mapping and mapping of old mines and working to be launched in the near future. Followed by soil sampling and trenching.

## Miniac Project - Abitibi, Quebec

- **Completed 3D IP at our Miniac Project in the Abitibi, QC, ahead of planned Phase II drilling.**

## J2 Metals Inc.

- **February 2026** - Completed upsized non-brokered private placement of \$3.8 million (upsized from \$2.5M) at \$0.25 per subscription receipt.
- **February 2026** - Closed first tranche of non-brokered flow-through private placement of up to \$1.5 million at \$0.35 per subscription receipt, raising \$478,000 in the first tranche to fund exploration at the Miniac Project.
- **April 2026** - Completed the plan of arrangement to spin-off of its wholly-owned subsidiary, Twenty Mile Metals Inc., which holds the Twenty Mile project located in British Columbia.



# CORPORATE OVERVIEW



## Capitalization

Common shares issued and outstanding	43,384,721
Warrants	11,321,663
Stock Options	1,682,573
<b>Current Fully Diluted</b>	<b>56,388,957</b>

\*As of May 6, 2026

## Share Performance



## Projects

### Sierra Plata Project - Zacualplan/Taxco, Mexico

- 100% option w/ IPT.V
- 2,200 hectares in major historic silver district (Taxco/Zacualpan).
- 5 historical silver-gold mines inside the Sierra Plata project area.
- Strategically located in the heart of a regional mineralized system spanning 40km. Numerous productive trends and fault structures identified.
- Confirmed silver, gold, and antimony prospectivity sitting above a potential epithermal bonanza zone.
- Access to Impact Silver's local technical expertise & drills.
- Next: (1) mapping, mag survey, LiDAR; (2) add'l geochem; (3) drilling.

### Miniac Project - Abitibi, Quebec

- 100%-owned in the Abitibi Greenstone Belt
- Historical gold intercepts and recent high resolution geophysics indicate strong targets
- Immediate IP planned to enhance sulphide vectoring followed by Phase II discovery drilling (12 holes planned).

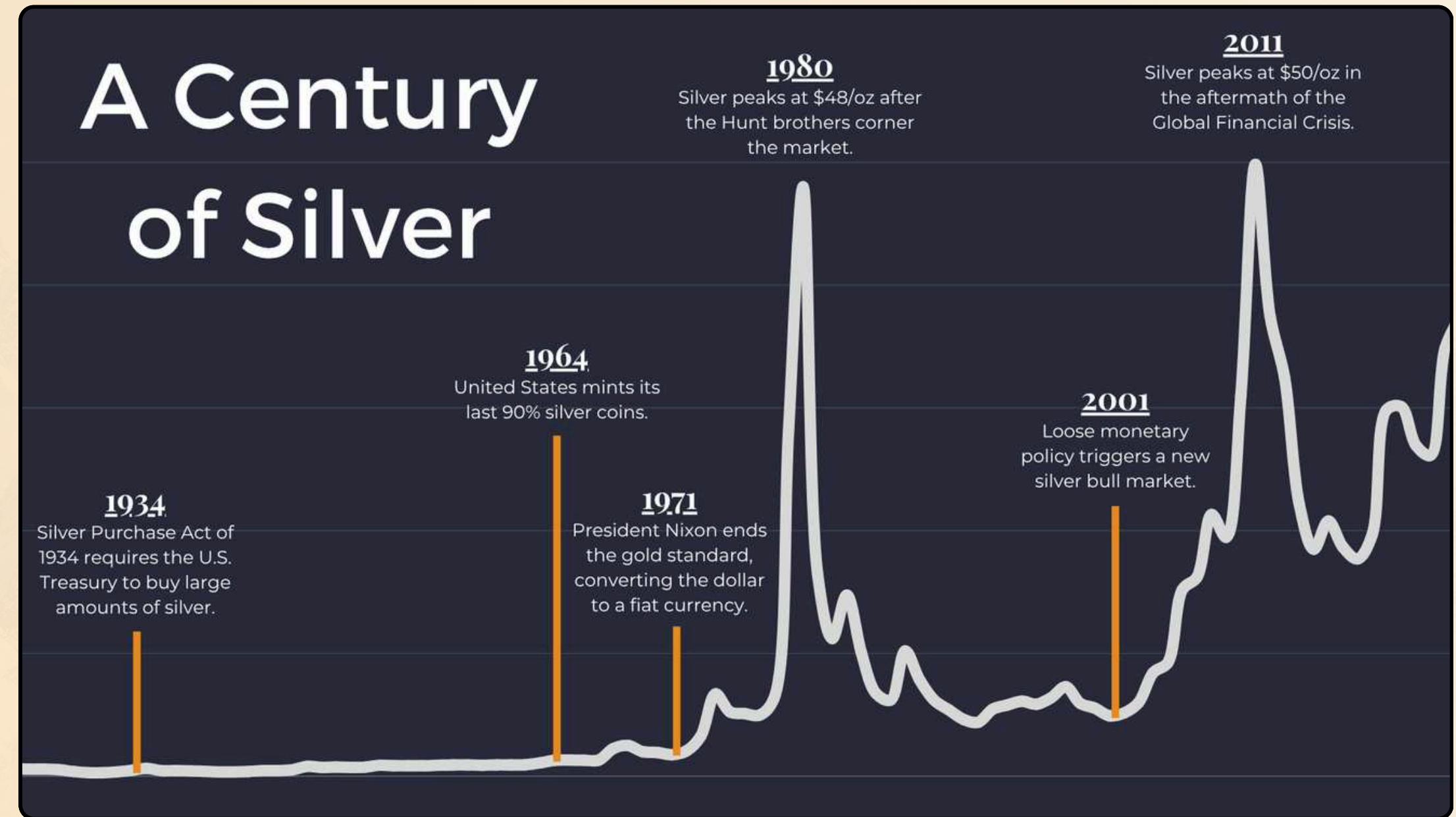
### Napoleon, Alaska

- Lode hunt: surrounding area has up to 1m oz Au placer production.
- J2 has the high ground. Chips to 593 g/t Au. Drilling by Teck and Kennecott of up to up to 8.9 g/t Au over 3 m. Now to Phase II drilling.
- New high resolutions geophysics and several undrilled key areas.



# Why Silver Offers Compelling Investment Upside

- **Strong Price Momentum:** Silver is trading at record highs, outperforming gold and attracting growing investor capital.
- **Favourable Macro Backdrop:** Expected interest-rate cuts and currency pressures increase the appeal of non-yielding hard assets.
- **Safe-Haven Demand:** Ongoing geopolitical and economic uncertainty continues to support precious metals investment.
- **Structural Industrial Support:** Solar, electrification, AI infrastructure, and advanced electronics provide durable, non-discretionary demand.
- **Tight Supply & Inventories:** Inelastic supply and years of market deficits amplify sensitivity to demand growth.
- **Upside Leverage:** Silver's smaller, less liquid market can translate incremental investment flows into outsized price moves.



Source: "Silver Prices – 100 Year Historical Chart & Data," Macrotrends, accessed January 2026, <https://www.macrotrends.net/1470/historical-silver-prices-100-year-chart>

*Tight supply, essential demand, and capital inflows set the stage for continued strength in silver.*



# SIERRA PLATA

ZACUALPLAN / TAXCO, MEXICO



**Deposit Type:** Epithermal Silver–Antimony | **Size:** 2,200 ha  
**Stage:** Pre-Drill / Advanced Targeting | **Ownership:** 100% Option (IPT.V)

- Located in the **historic Zacualpan–Taxco District**, one of **Mexico’s most established silver-producing regions** with **more than 500 years of mining history**. It was one of the most important silver and gold districts in the Spanish Empire.
- Project area hosts **multiple past-producing silver-gold mines**, providing **clear evidence of a robust, repeatable mineralizing system** and **reducing geological risk**.
- **Strong silver and antimony prospectivity** associated with **structurally controlled epithermal vein systems**, with antimony (stibnite) acting as both a valuable co-product and indicator of a fertile hydrothermal system.
- **Numerous productive trends and fault structures identified**. Near-term plan includes magnetic survey, LiDAR, and geochemistry, followed by drill testing to expand known mineralization and test unexploited extensions.



# SIERRA PLATA

ZACUALPLAN / TAXCO, MEXICO



## Transaction Background:

- **IMPACT Silver**, the optionor, prefers to fast track development of non-core areas especially promising exploration acreage.
- The Mexican Government has paused material land concessions in the metals space.
- Government has implemented a “use it or lose it” policy on dormant acreage, otherwise imposing tax liabilities on land to encourage spending.
- Ready access to excess toll capacity in the area to advance monetization of asset.

# Sierra Plata – Strategic Positioning & Value Drivers



## District Position & Peer Context

- Strategically **located within the core mineralized corridor of the Zacualpan–Taxco District**, with immediate neighbours including Grupo Mexico and Impact Silver, positioning Sierra Plata at the center of a large-scale mineralized system.

## Historic Mining & Grade Context

- The project **hosts multiple historic silver–gold mines and extensive underground workings, with historic head grades understood to average ~500 g/t Ag, underscoring the high-grade nature of mineralization.**
- Grupo Mexico’s multi-level San Miguel Mine, a strong restart candidate, likely dips/extends into the Sierra Plata project area.

## Antimony Upside & Structural Continuity

- **Structural trends hosting high-grade stibnite (antimony) exceeding 10,000 ppm. This mineralization extend directly into the Sierra Plata project area, reinforcing silver–antimony upside and depth potential.**

## Technical Foundation & Execution Advantage

- **Extensive prior technical work completed by Impact Silver, including mapping over approximately half of the project area, provides a strong technical foundation and enables efficient advancement of exploration.**
- The transaction allows Impact Silver to focus on production, while J2 advances exploration with access to Impact’s local technical expertise and regional drilling infrastructure, materially reducing execution risk.

## Transaction Structure

- **3-year option to earn 100% ownership from Impact Silver**
- 1.5% NSR (buy-down to 0.75%)
- Consideration includes C\$250k in J2 shares, C\$1.35m in exploration expenditures, and staged payments totaling 6.5m J2 shares.

# Sierra Plata Transaction – CEO Perspectives



## CEO Fred Davidson – IMPACT Silver (Dec 23, 2025 press release)

*“While IMPACT's strategy is focused on near-term increases in brownfield exploration and production opportunities close to our processing facilities, transactions such as this, partnering with a funded and experienced junior exploration team, allow us to unlock additional value and exploration upside without deploying our own financial or human capital. Against a backdrop of record silver prices, our team remains focused on optimizing existing operations, and we are excited to participate in J2's success as it advances exploration across this prospective area.”*

*“The area is located on the northwest extension of the renowned Taxco mining district, a region with a centuries-long history of continuous silver-gold exploration and production. While this specific area lies beyond economical trucking distance of IMPACT's existing processing facilities, IMPACT has completed reconnaissance and limited exploration work on the Property with encouraging results to date, highlighting its standalone exploration potential.”*

## CEO Thomas Lamb – J2 Metals Inc. (Dec 23, 2025 press release)

*“Under Mexican mining regulations, certain concessions require regular investment, and Sierra Plata lies outside Impact’s current production focus, creating a compelling opportunity for J2 to advance the project.”*

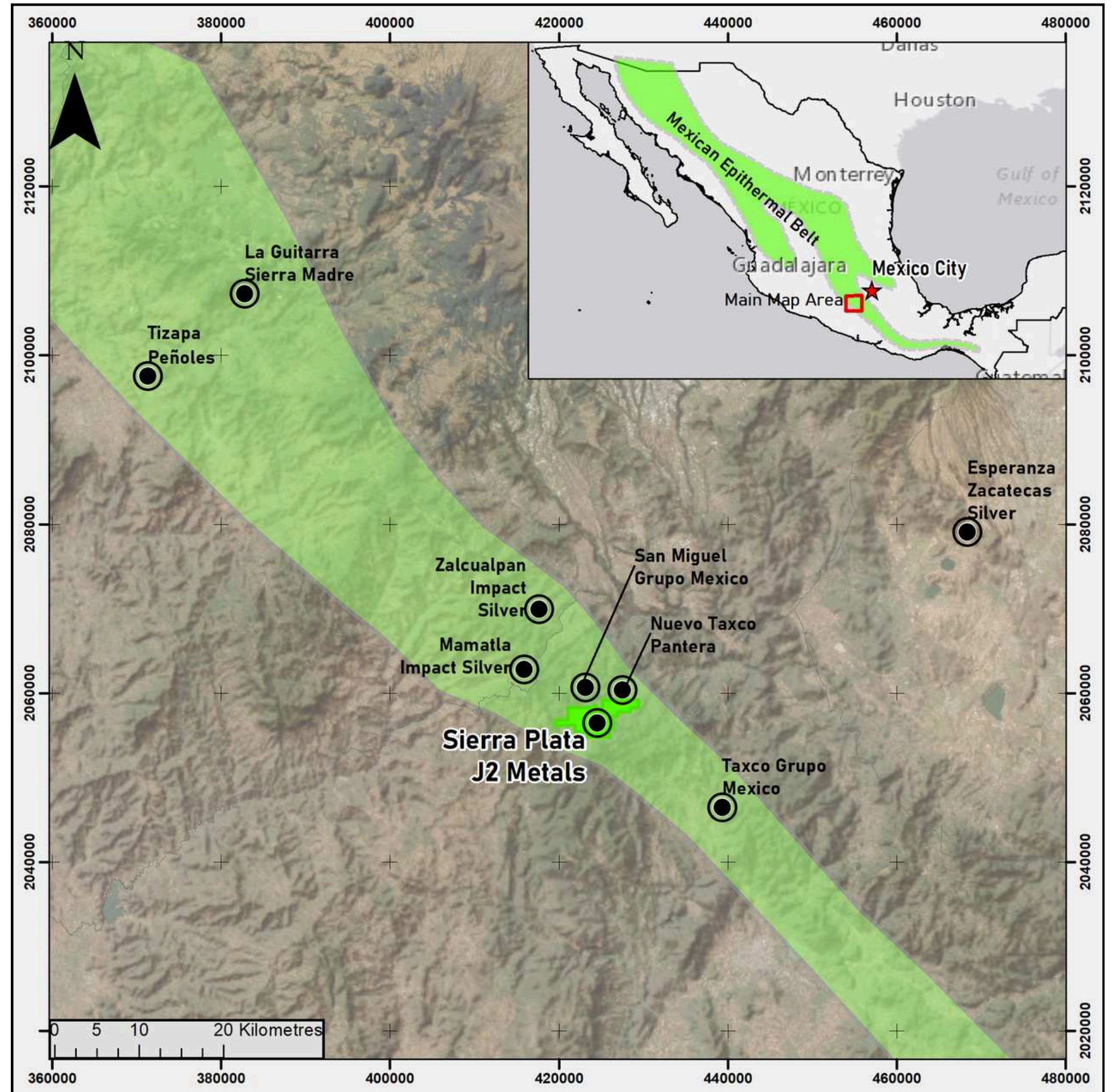
*“Sierra Plata hosts five historic silver mines and numerous historic workings. The historic, multi-level San Miguel Mine, which ceased production in the 1930s, is understood to extend from Grupo México ground into the Sierra Plata Project. We believe that at current silver prices San Miguel is a strong candidate for a production restart, which would obviously be an exciting catalyst for J2.”*

*“Beyond visiting several historic mines and workings, our team’s recent site visit to Sierra Plata confirmed multiple vein systems and structural trends in and around the project. Prior work by Impact indicates that important regional mineralized trends extend across the Sierra Plata land package. With Impact focused on its core producing areas, J2 is well positioned to advance exploration on this important part of the broader district.”*

*“Through this agreement, we expect to benefit from Impact’s experienced local technical teams, established infrastructure, and strong community relationships. The region also hosts several nearby processing facilities, including those operated by Impact, which could provide valuable optionality should Sierra Plata advance toward production of silver and antimony.”*

## Graham Giles, VP Exploration of J2, commented:

*“The Sierra Plata Project has benefited from extensive prior work completed by Impact Silver, allowing J2 to advance exploration efficiently. Approximately half of the property has been mapped, and multi-element silt geochemistry has been completed across the drainage systems. Satellite surveys have identified widespread spectral anomalies of alteration, which may represent the upper portions of an epithermal system. This interpretation is supported by elevated mercury, antimony, and arsenic values, suggesting the potential for higher-grade mineralization at depth. In addition to the five historic silver mines within the project, there are numerous historic workings that remain largely untested.”*



# SIERRA PLATA PROJECT

## Large-Scale Land Package in a Major Historic Silver District

The Zacualpan District, located near the historic mining center of Tacxo in Guerrero, is **one of Mexico's well-established precious metals districts with a long legacy of silver production.** The district benefits from excellent infrastructure, skilled local workforce, and a strong mining culture that has supported continuous exploration and development for more than a century.



# MULTIPLE PAST-PRODUCING SILVER MINES LOCATED WITHIN PROJECT AREA

*Numerous productive trends and fault structures identified across the project.*

The presence of multiple former mines within the project area provides clear evidence of a **robust and repeatable mineralizing system**, significantly reducing geological risk. Historic workings, mine dumps, and underground development also offer valuable data points for modern exploration, including direct access to mineralized structures and opportunities for cost-effective sampling and drilling.



## STRONG SILVER AND ANTIMONY PROSPECTIVITY

The project area demonstrates strong silver and antimony prospectivity within the historic Zacualpan District near Taxco, Guerrero, where structurally controlled epithermal vein systems host high-grade silver mineralization with associated antimony, commonly occurring as stibnite. The presence of antimony serves as both a valuable co-product and an important indicator of a fertile hydrothermal system, enhancing the overall prospectivity of the district and supporting the potential for high-grade shoots and untested vein extensions, particularly along major structures and structural intersections.



# SIERRA PLATA - Site Visit & Sampling



## GEOCHEMICAL ASSAY RESULTS - EL SABRINO & SAN MIGUEL MINE WASTE DUMPS

Sample ID	Location	Easting	Northing	Au (ppm)	Ag (ppm)	AuEq (ppm) <sup>1</sup>	AgEq (ppm) <sup>2</sup>
K074324	San Miguel	421914	2058296	12.8	3100	60.49	3932.00
K074325	San Miguel	421914	2058296	4.32	1120	21.55	1400.80
K074318	El Sabrino	421842	2056396	0.905	878	14.41	936.83
K074319	El Sabrino	421842	2056396	0.381	512	8.26	536.77
K074320	El Sabrino	421842	2056396	0.525	633	10.26	667.13
K074321	El Sabrino	421842	2056396	0.246	394	6.31	409.99

<sup>1</sup> Gold Equivalent (AuEq) calculated via the formula: Au (g/t) + [Ag (g/t) / 65].

<sup>2</sup> Silver Equivalent (AgEq) calculated via the formula: Ag(ppm) + [Au (ppm) \*65]

## DUE DILIGENCE SAMPLING CONFIRMS HIGH-GRADE MINERALIZATION:

December 10, 2025 - Grab samples taken from quartz vein material of the historic El Sabino and San Miguel mine waste dumps **returned high-grade silver and gold values, confirming the strong precious-metal endowment of the Sierra Plata system.**

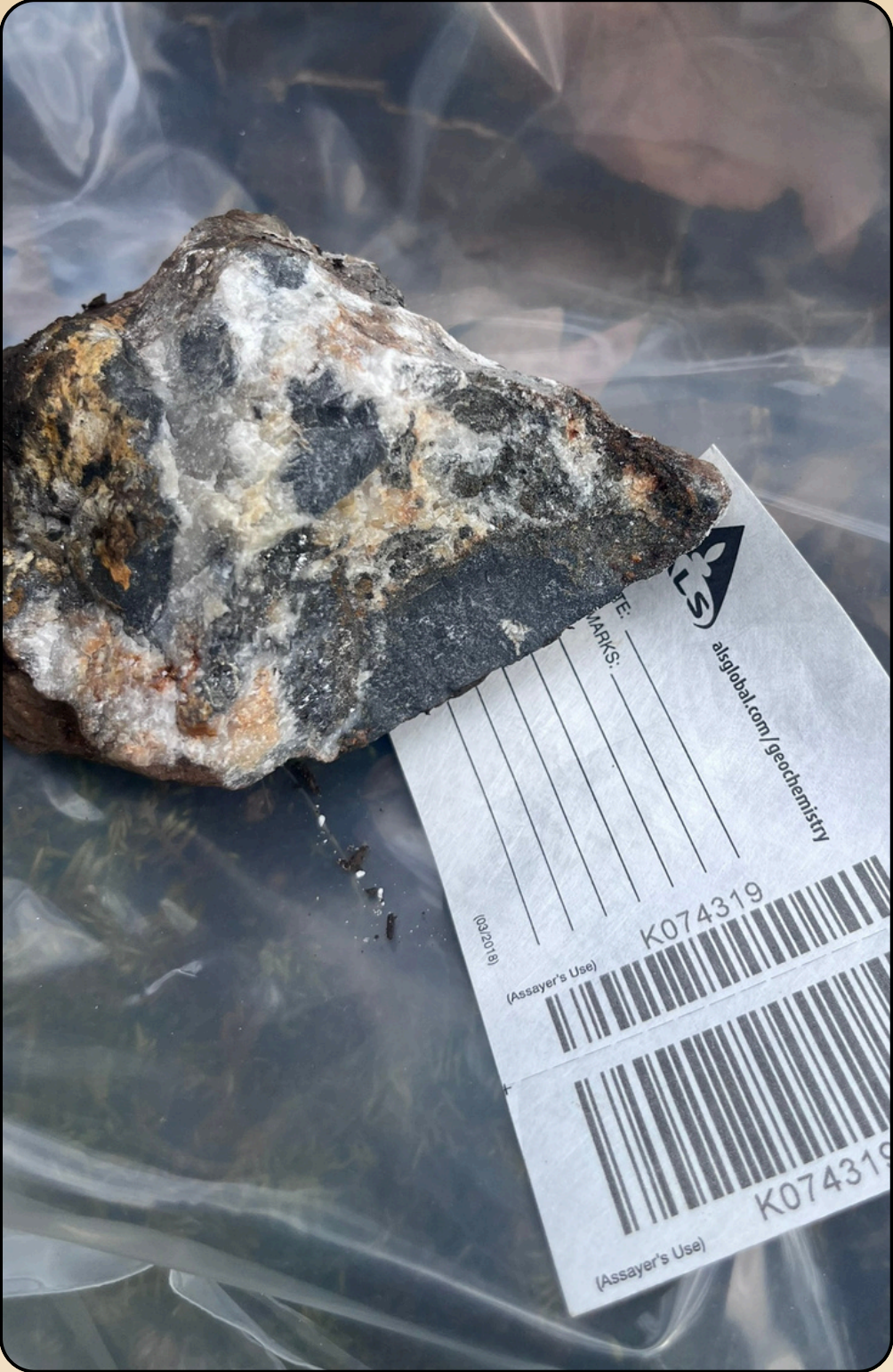
**Best Result:** Sample K074324 (San Miguel) - 3,100 g/t Ag + 12.8 g/t Au = **60.49 g/t AuEq and 3932 ppm AgEq**

## NEXT STEPS:

- **Mapping & Geochemistry** - Extensive follow-up of geological mapping and geochemical sampling underway across the 2,200-hectare project area to define high-priority drill targets.
- **Magnetic Geophysics** - Geophysics contractors currently engaged. Airborne and ground magnetic surveys to image structural controls on silver-gold mineralisation.
- **Drilling** - Drill high-confidence targets identified by sampling and geophysics, emphasising veins under historic silver-gold mines.

**Graham Giles, VP-Exploration, commented:** “Samples at both locations consisted of fine grain Argentite hosted within Quartz Veins. Original widths of these veins are not known, but they speak to the high-grade nature of the system and we are looking forward to drilling these structures as soon as possible.”

# SIERRA PLATA SITE SAMPLES



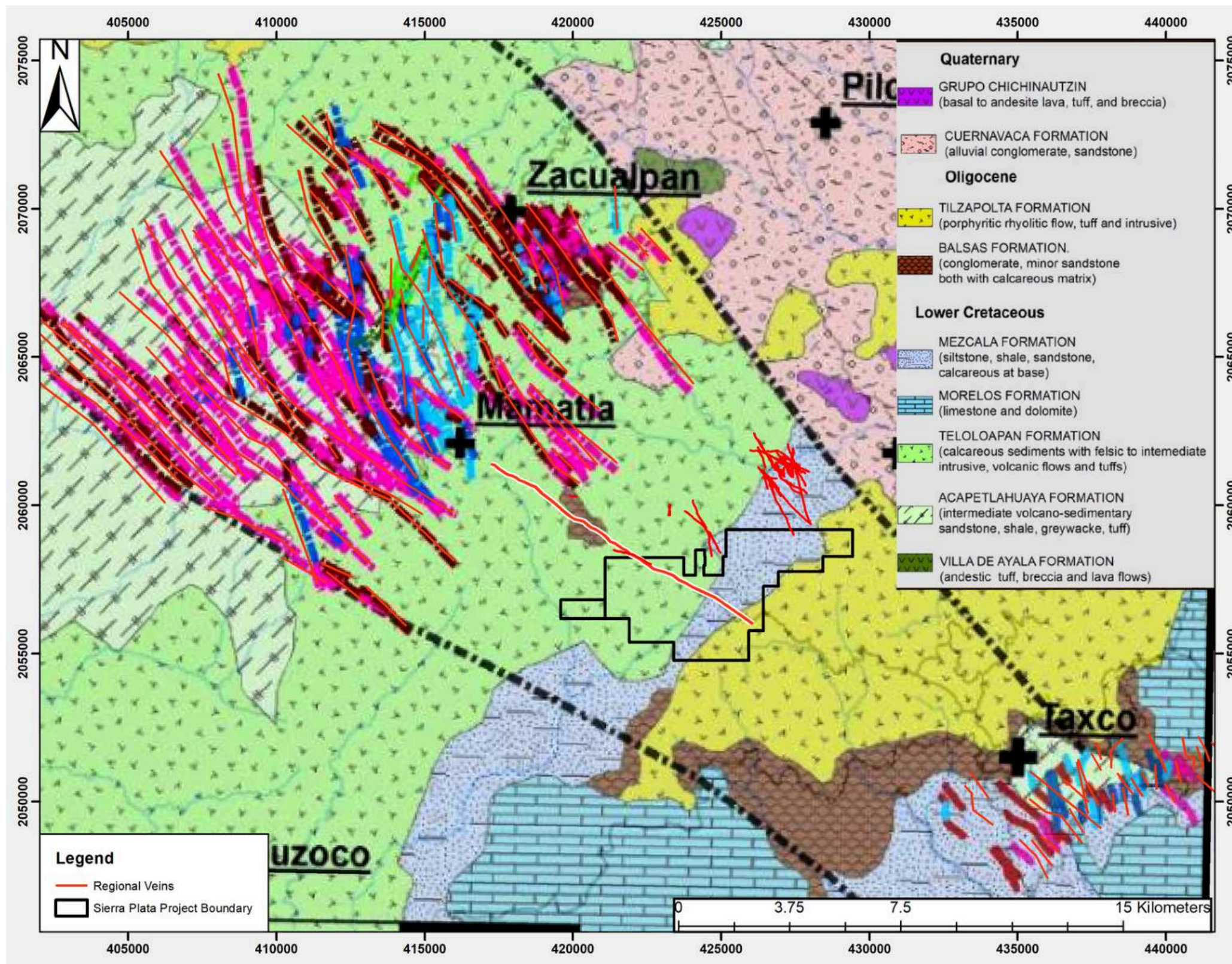


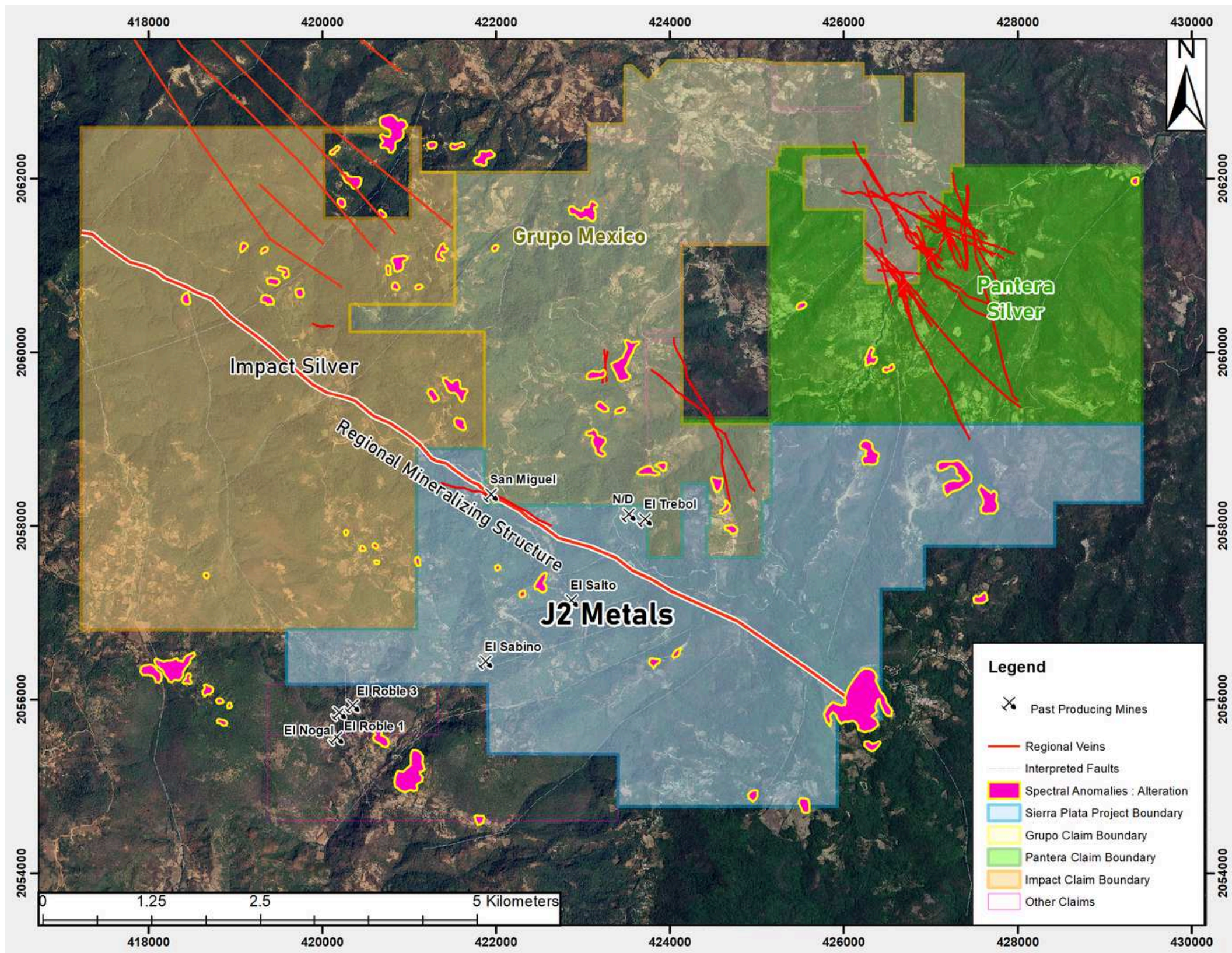


# SIERRA PLATA

## Geological Context & Depth Potential

- Sierra Plata is located between Taxco and Impact's producing Zacualpan Property within the Taxco epithermal belt.
- It is located at a higher elevation than the mineralized systems at Taxco and Zacualpan and in geological units that regionally overlie the Acapetlahuaya Formation where the bulk of the silver production has occurred from. **We believe the vein system continues at depth at Sierra Plata.**
- Economic veins tend to exist between 1700m and 1900m elevation at Zacualpan. The Sierra Plata property elevation ranges from approximately 1900m to 2600m
- We believe there is **tremendous opportunity for discovery at depth at Sierra Plata** in amenable geologic units.





# SIERRA PLATA

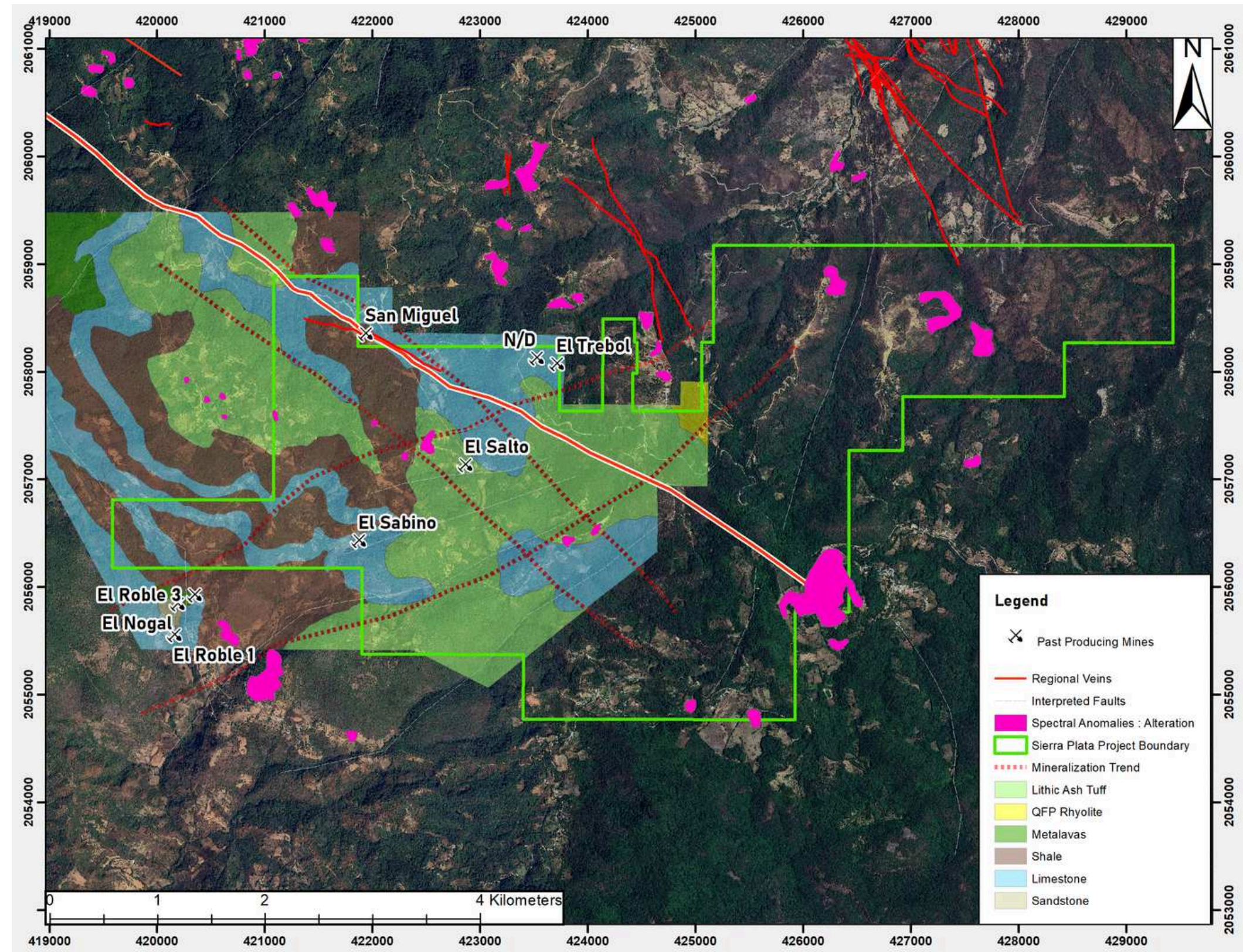
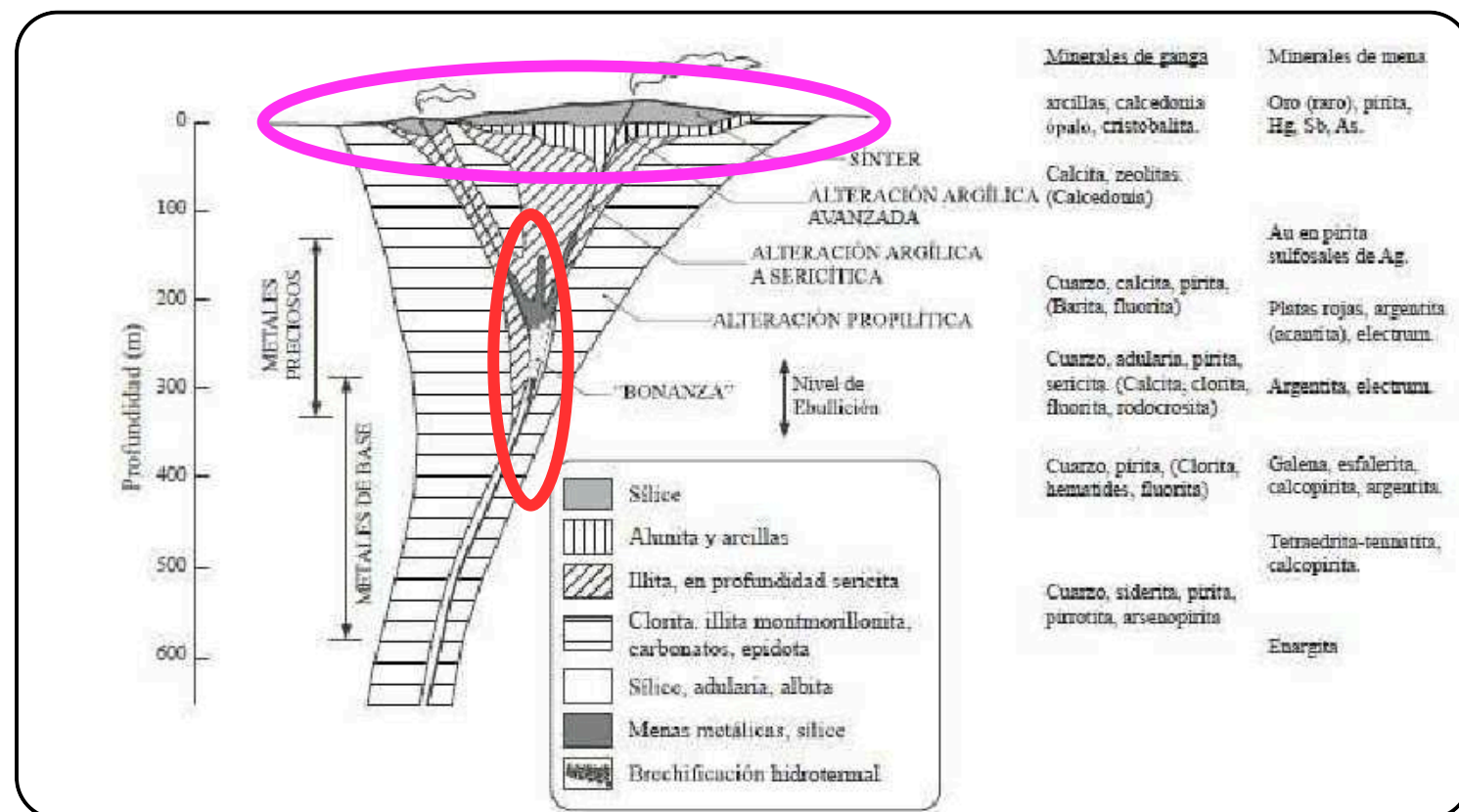
## Regional Structure and Access

- Sierra Plata is located next to projects owned by Grupo Mexico and Pantera Silver.
- The project area is well accessed by dirt roads and is can be easily reached by vehicle from Taxco.
- A major regional Mineralizing structure runs NW-SE and connects Zalcualpan with Taxco.
- Mining operations at Zalcualpan observe veins tend to follow this main orientation as well as oblique structures subparallel to this and NE-SW trends.

# Top of an Epithermal System



- Sierra Plata's **surface geology consists of intercalated stratas of shale and limestone** with lesser Intrusive Rhyolite proximal to major fault structures.
- **Satellite hyperspectral data has identified zones of argillic alteration** which **signify the tops of potential epithermal systems at Sierra Plata.**
- Epithermal veins crosscut all strata while the manto-style Limey Sandstone found at the lowest elevation (1900m) dips 25 degrees to the NNE.



# Sierra Plata Exploration Plan

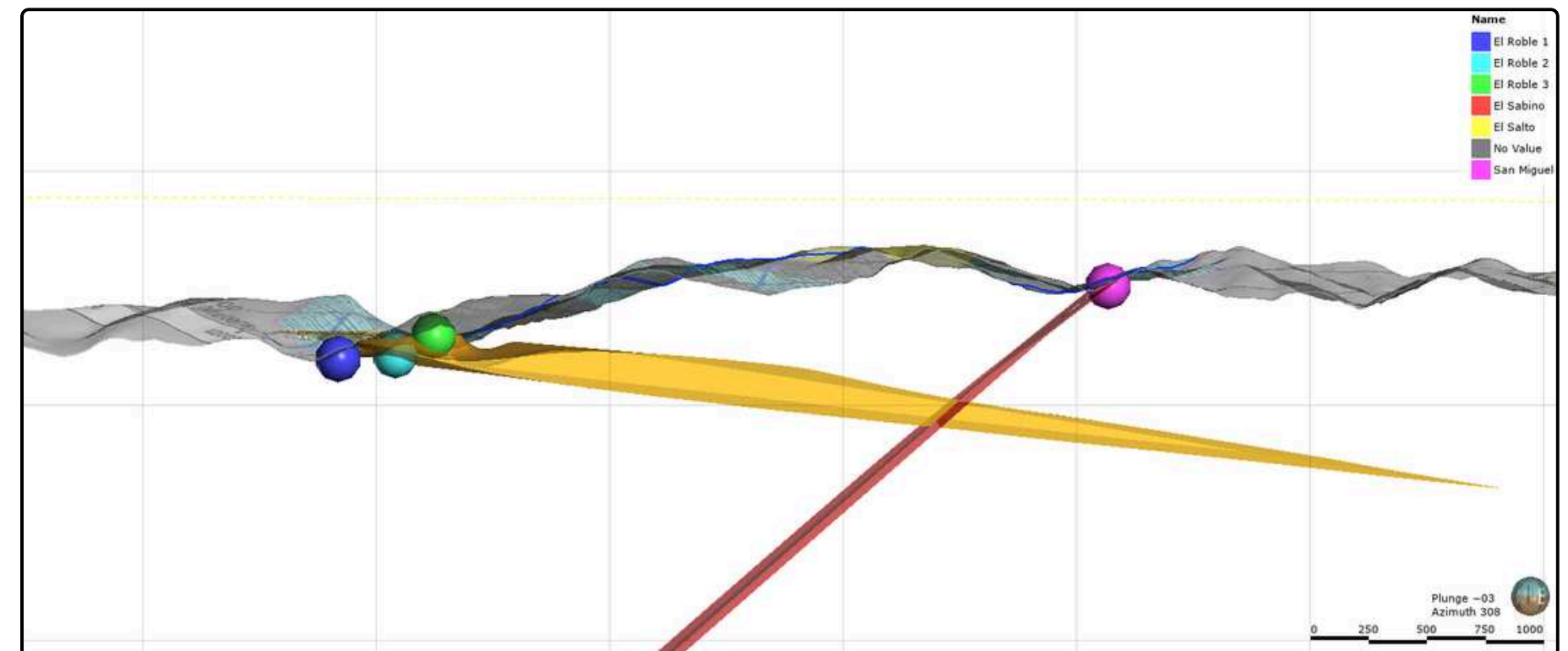
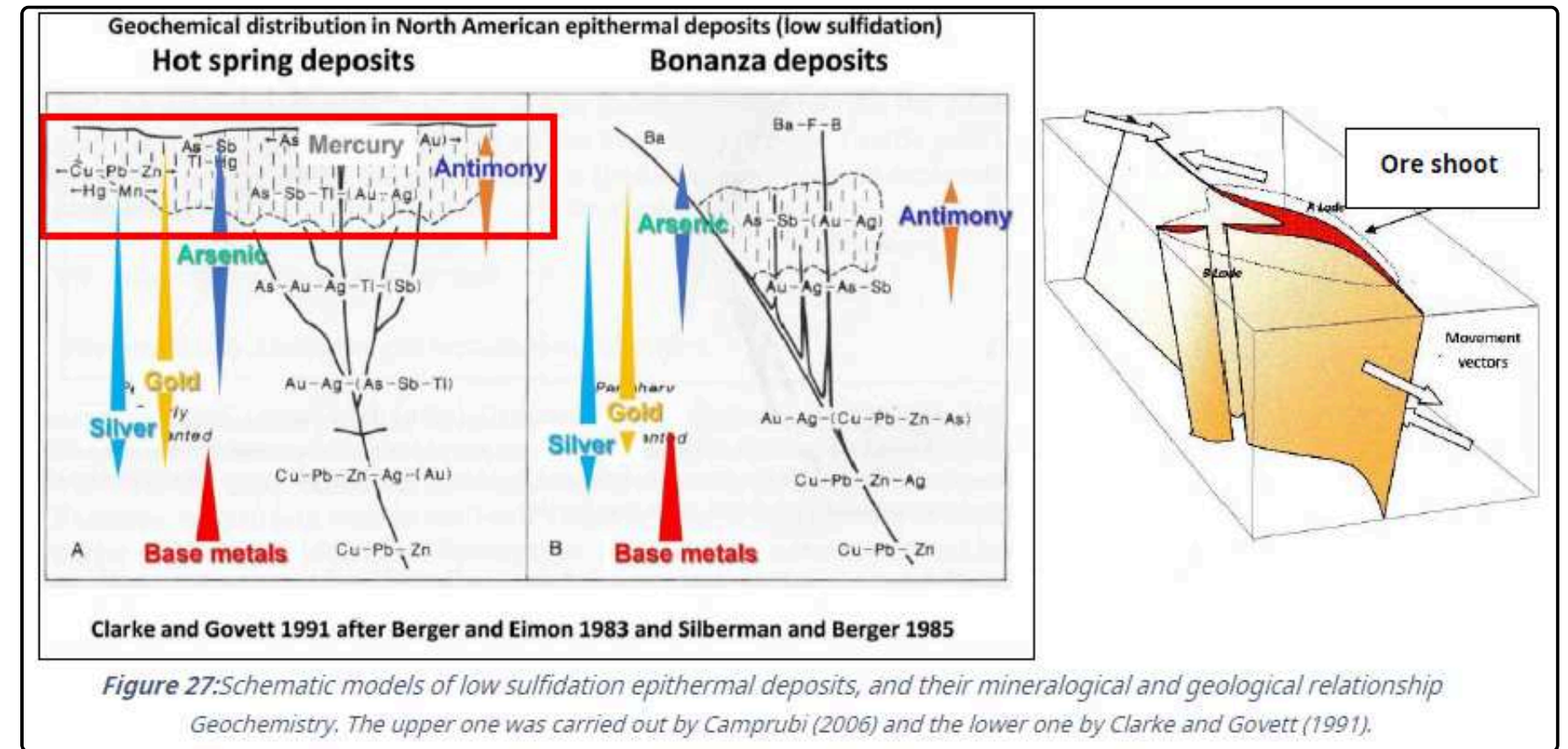


## Deposit Targetting

Intermediate Sulfidation Epithermal veins tend to have metal zonation that can predict precious metal enrichment at depth. Antimony which is identified by massive stibnite at the El Roble mine is hosted within a fracture amenable sandstone unit which gently dips under the Sierra Plata property. Silver zonation tends to fall below this elevation.

J2 Plans to undertake a close spaced drone magnetic survey at the soonest opportunity in order to help refine our structural understanding of the property and to help identify possible 2<sup>nd</sup> order structures that may host bonanza mineralization.

This information in conjunction with added geochemistry and alteration mapping will improve drill targets for phase two drilling.





# MINIAC

ABITIBI, QUEBEC

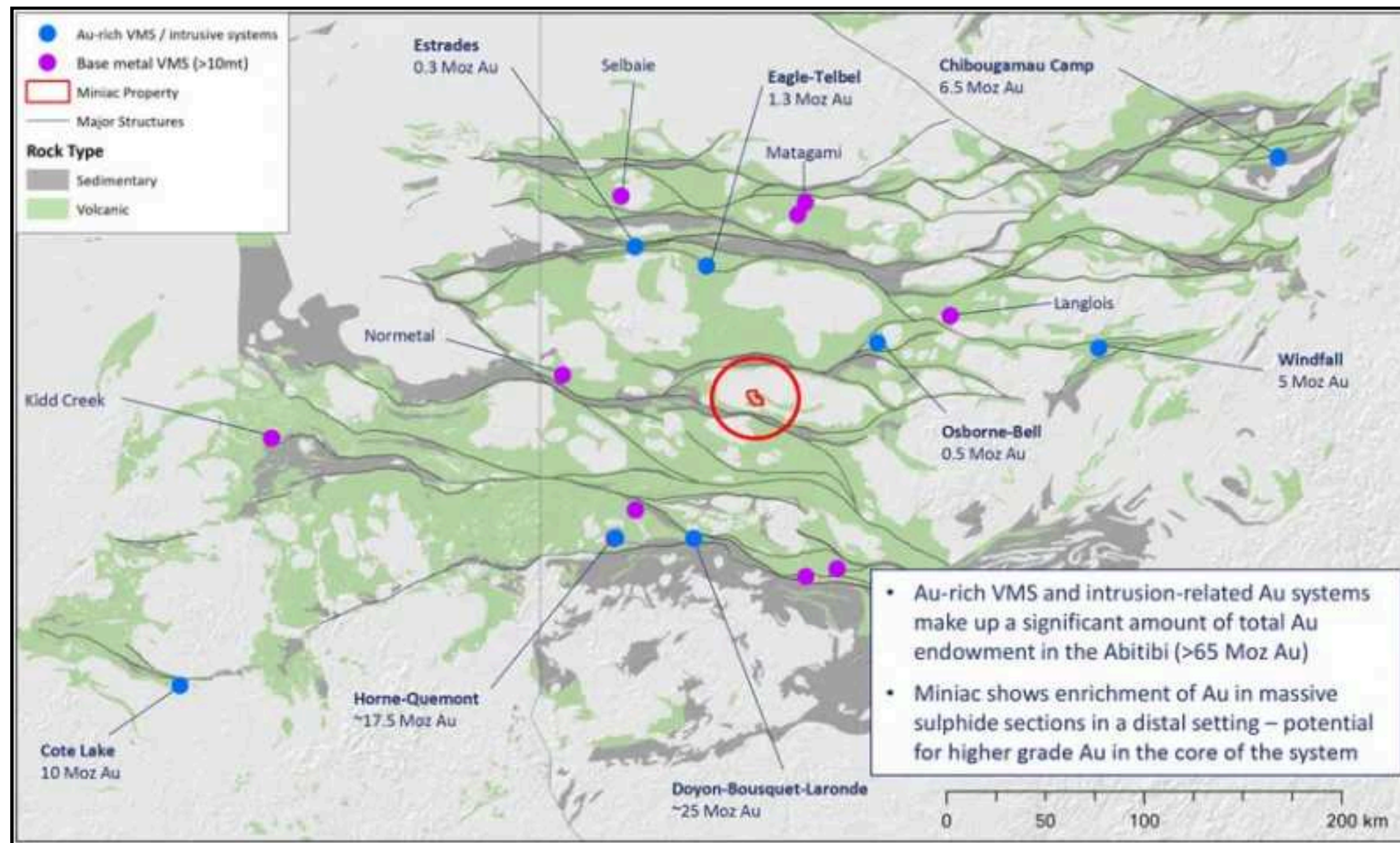


**Deposit Type:** Polymetallic VMS / Intrusion-related Gold  
**Stage:** Phase-II Drilling | **Ownership:** 100% J2 Metals

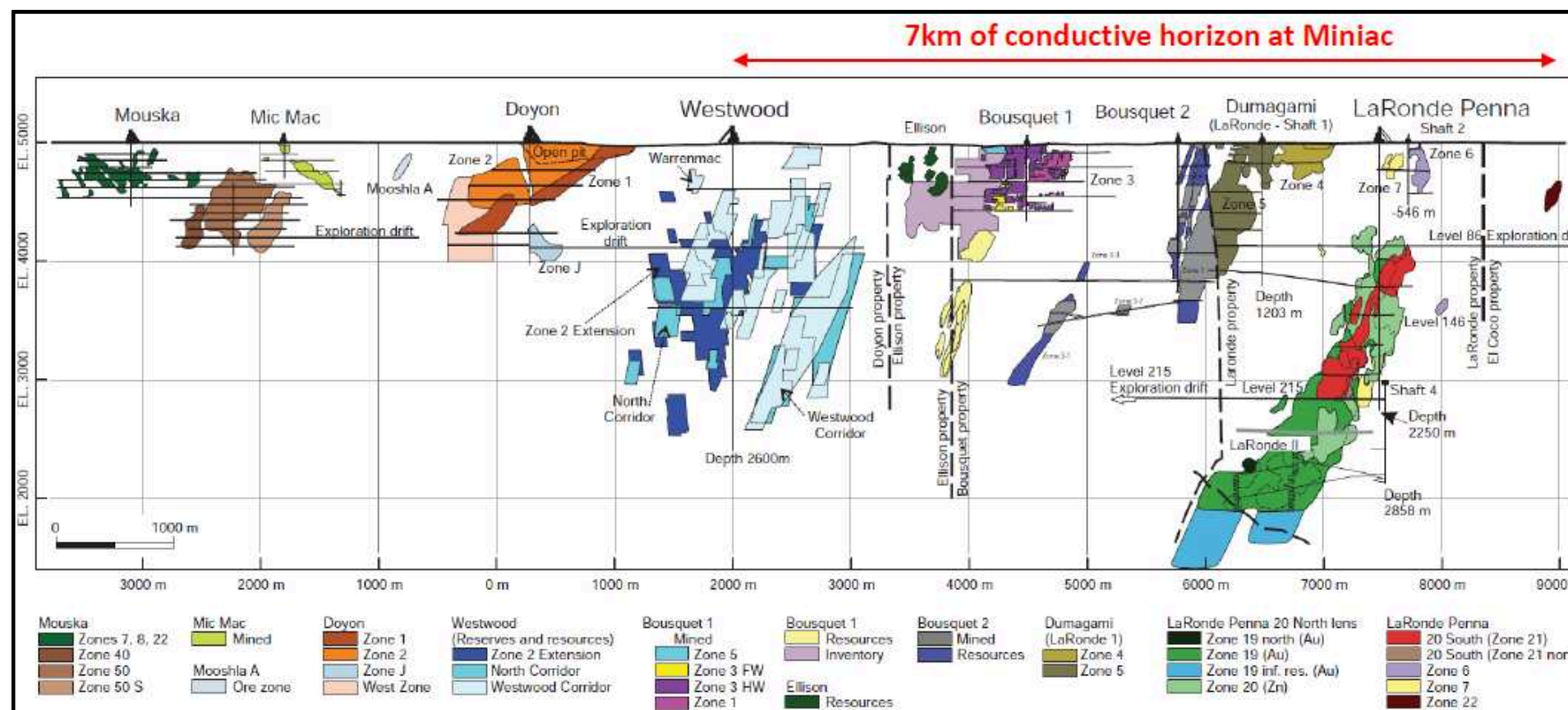
- Located in the **Northern Abitibi Volcanic Zone**, between the **Normetal and Osborne-Bell mines** along the **Chicobi Fault System**.
- **Polymetallic system** hosting **Au-Ag-Cu-Zn** massive sulphides at a felsic-mafic contact.
- **Acquired from and co-developed with Kenorland Minerals**, a major shareholder and technical partner.
- **Historic drilling: up to 4.8 g/t Au, 6.9% Zn; 1.05 g/t Au over 4.65 m.**
- **Recent high-resolution geophysics defines 19 high-priority targets.**
- Alteration comparable to **LaRonde VMS**, indicating strong potential.
- The project is located approximately 30km North of the town of Amos, Quebec. It is easily accessed by an extensive network of gravel logging roads across the entire claim package. A power line is 7 km away.

# MINIAC PROJECT

## District-Scale Depth Potential in the Abitibi Greenstone Belt

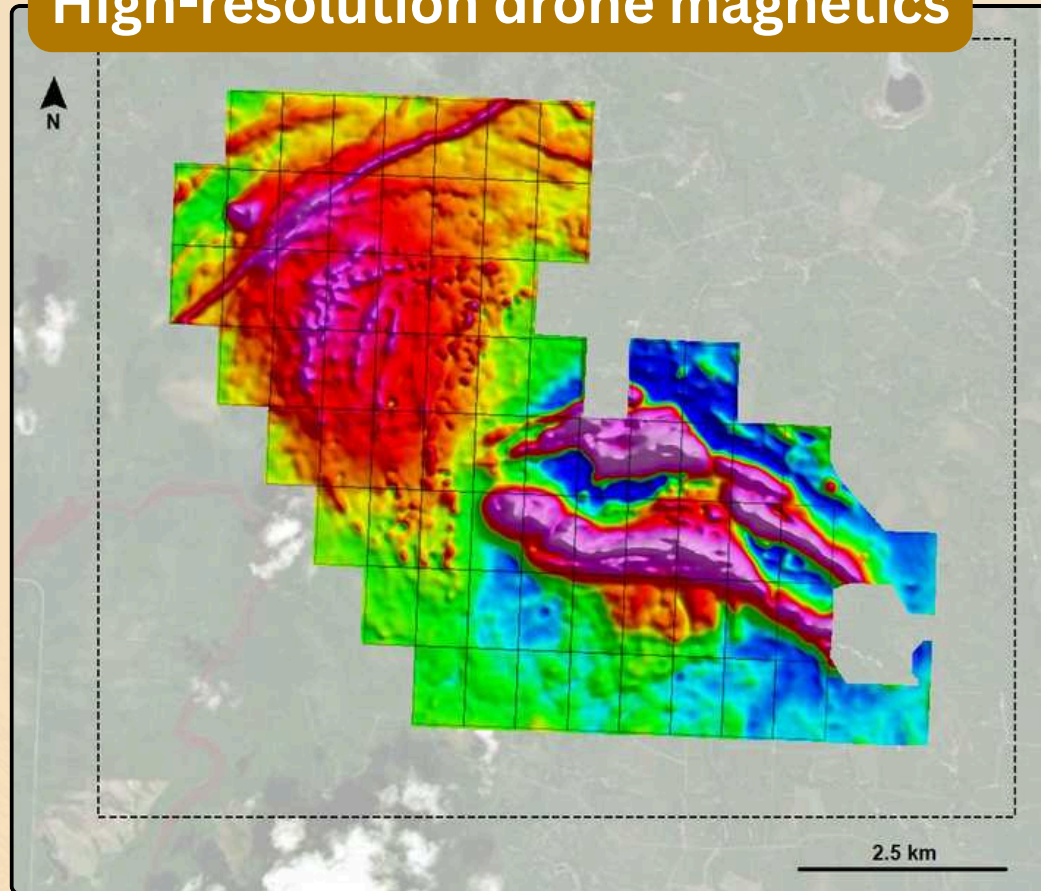


- Majority of the 13Moz at LaRonde Penna is located at >1km Depth.
- Westwood-Warrenmac almost entirely below surface.
- Intersecting broad zones of Au near surface is very promising at Miniac.
- The real potential may be at depth.
- Maximum depth of drilling at Miniac -230m.

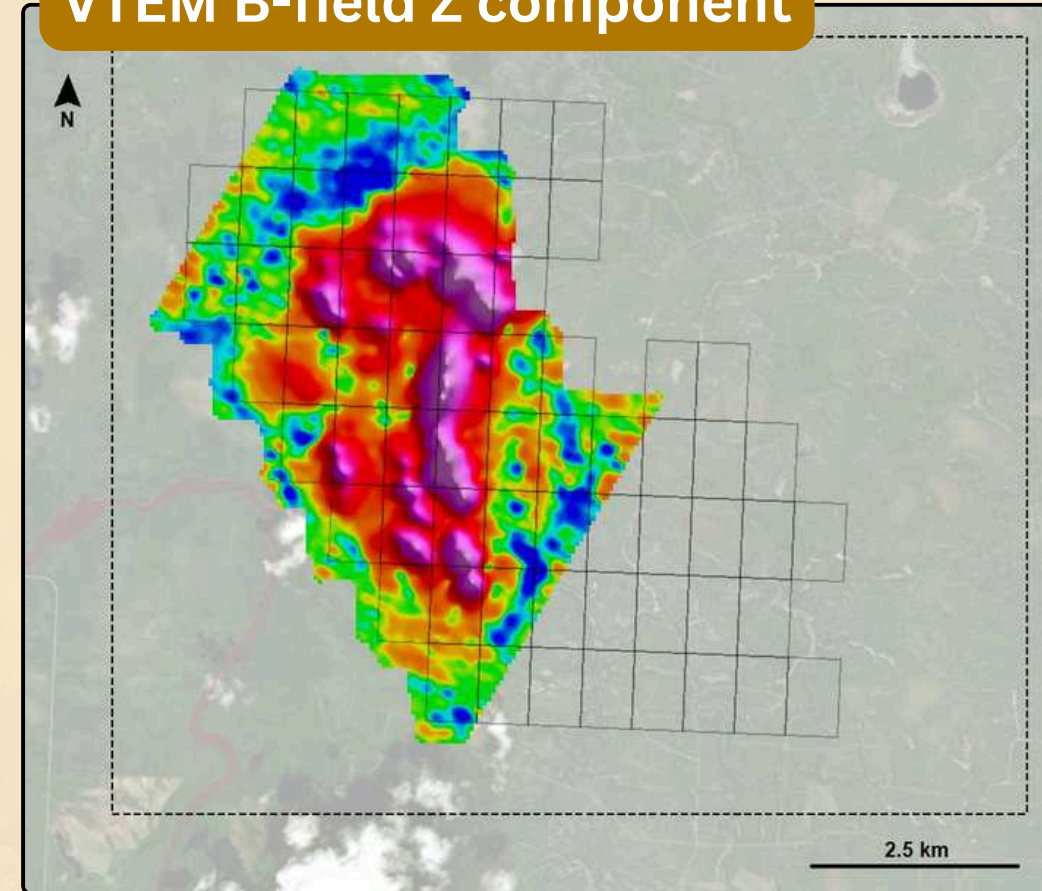




## High-resolution drone magnetics



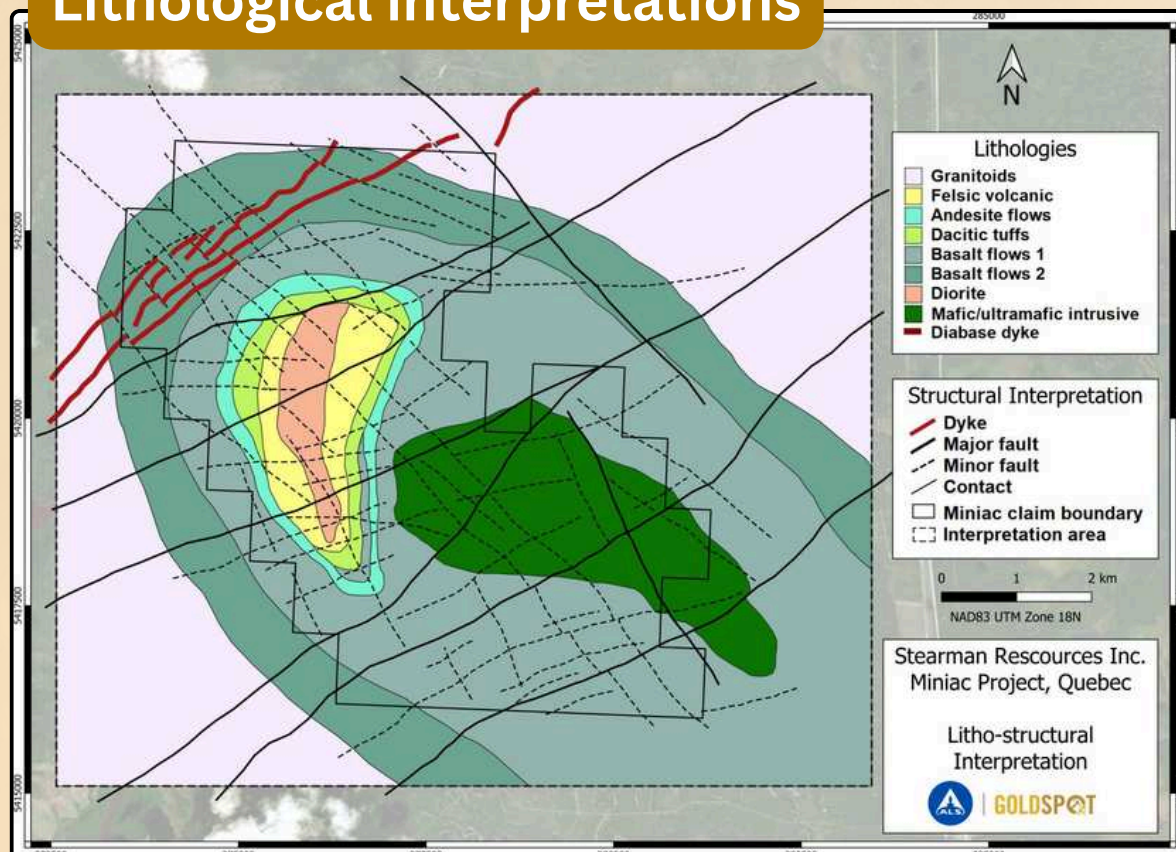
## VTEM B-field Z component



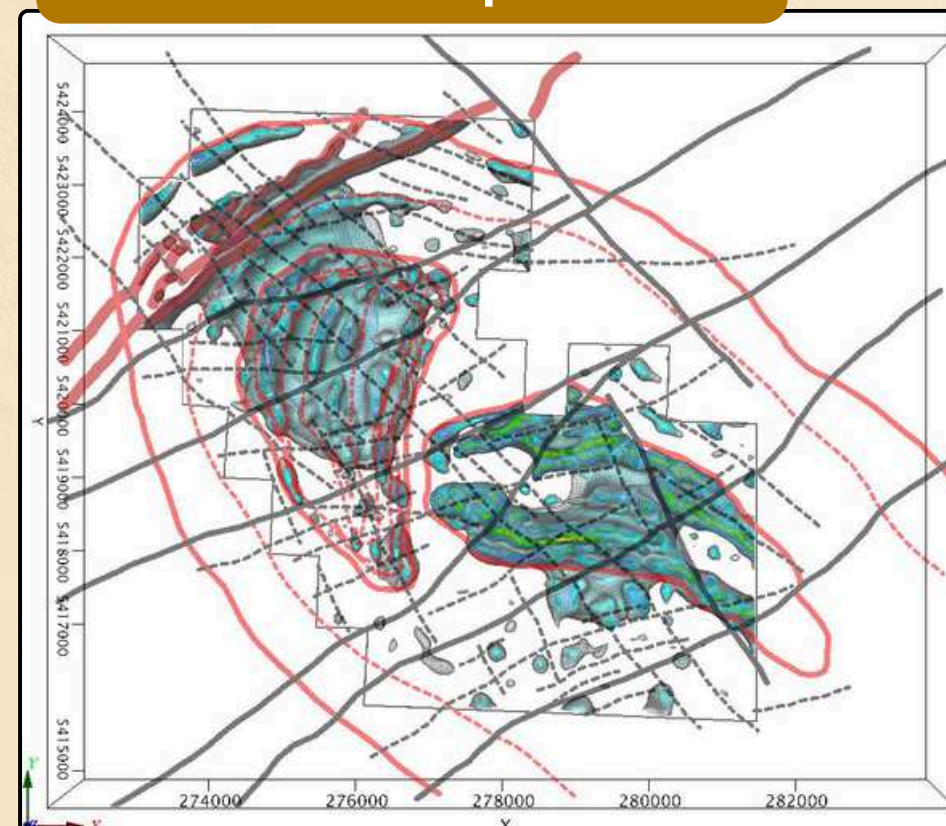
# Miniac Project – Geology & Targeting Framework

- Geology on the property consists of a mix of **mafic to intermediate volcanic and ash tuffs** as well as **granitic units**. Outcrop exposure is poor and the property is covered in **glaciolacustrine clays**.
- **Widespread anomalous Au-Ag-Zn-Cu mineralization** has been intersected across a **4km strike length at Miniac**. Mineralization is interpreted as **sulphide facies exhalative horizons** composed of **pyrrhotite-pyrite +/- chalcopyrite and sphalerite**. There is **possible Au enrichment from an interpreted NNW trending splay structure off the Chicobi deformation zone**. The **massive sulphide horizon** lines up well with **conductivity geophysics**.
- **High resolution drone magnetic and VTEM data covers the property** and was used by ALS Goldspot for a **Structural, Lithological, and ranked targets for follow-up**.

## Lithological interpretations



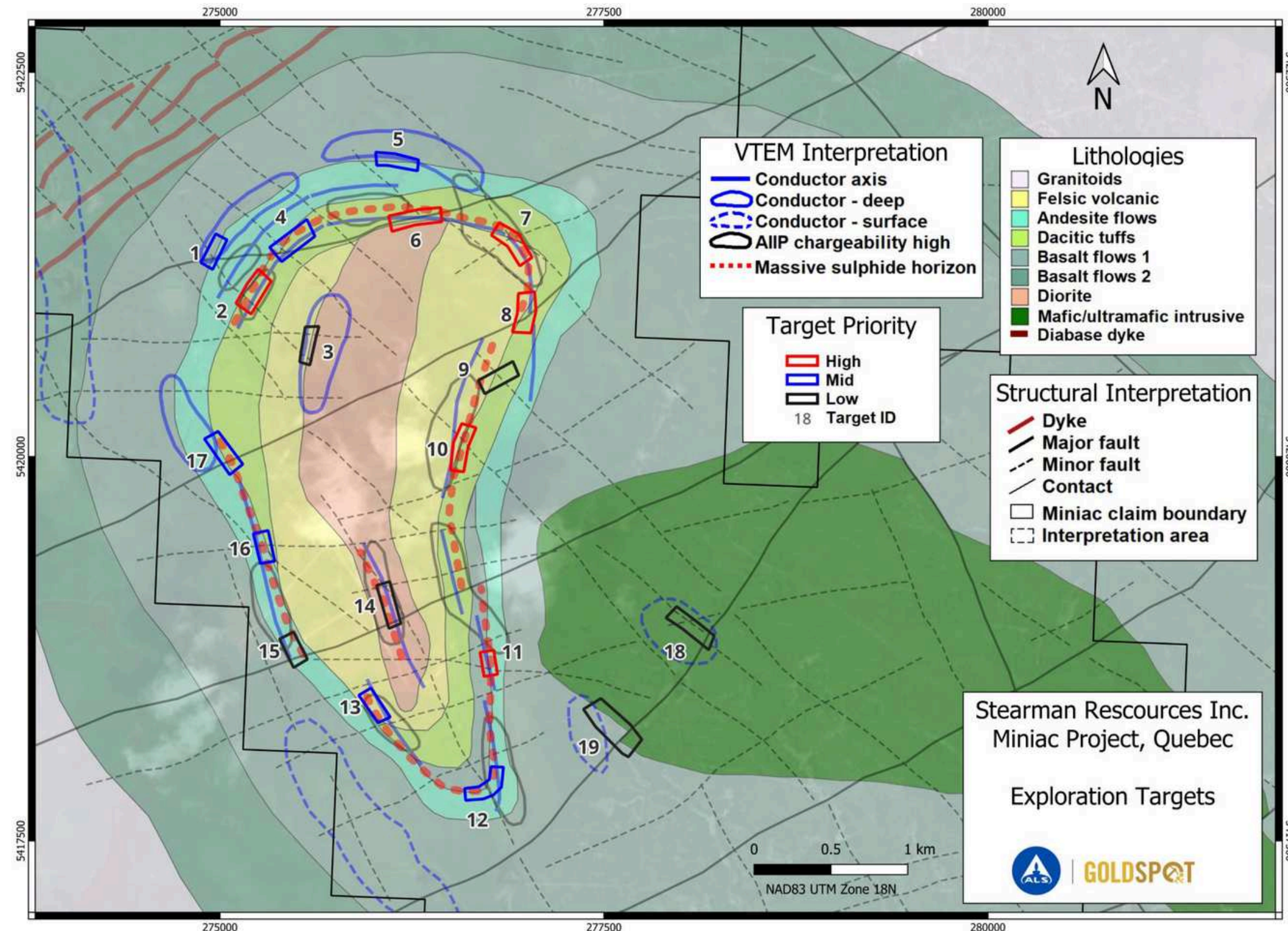
## Structural interpretations



# Miniac Exploration Plan



- In 2026, the Company plans to complete a two-phase exploration program on the highly prospective Miniac Property in the Northern Abitibi, Quebec. **Phase 1** will comprise a ~30 km IP survey over priority targets identified by ALS Goldspot (2023), integrating structural interpretation, magnetic inversion, and historical VTEM data to define drill targets at conductor–structure intersections.
- Past drilling is interpreted to have intersected distal VMS-style mineralization, including pyrrhotite (DH# DU-119) and quartz–biotite–garnet alteration (DH# DU-80), consistent with distal alteration at the LaRonde deposit analogue.
- Exploration to date has identified a ~7 km conductive horizon that remains largely untested. **Phase 2**, planned as a ~3,000 m drill program contingent on **Phase 1** results, is expected to benefit from the **strong, integrated geophysical dataset assembled in recent years.**





# NAPOLEON

ALASKA, USA

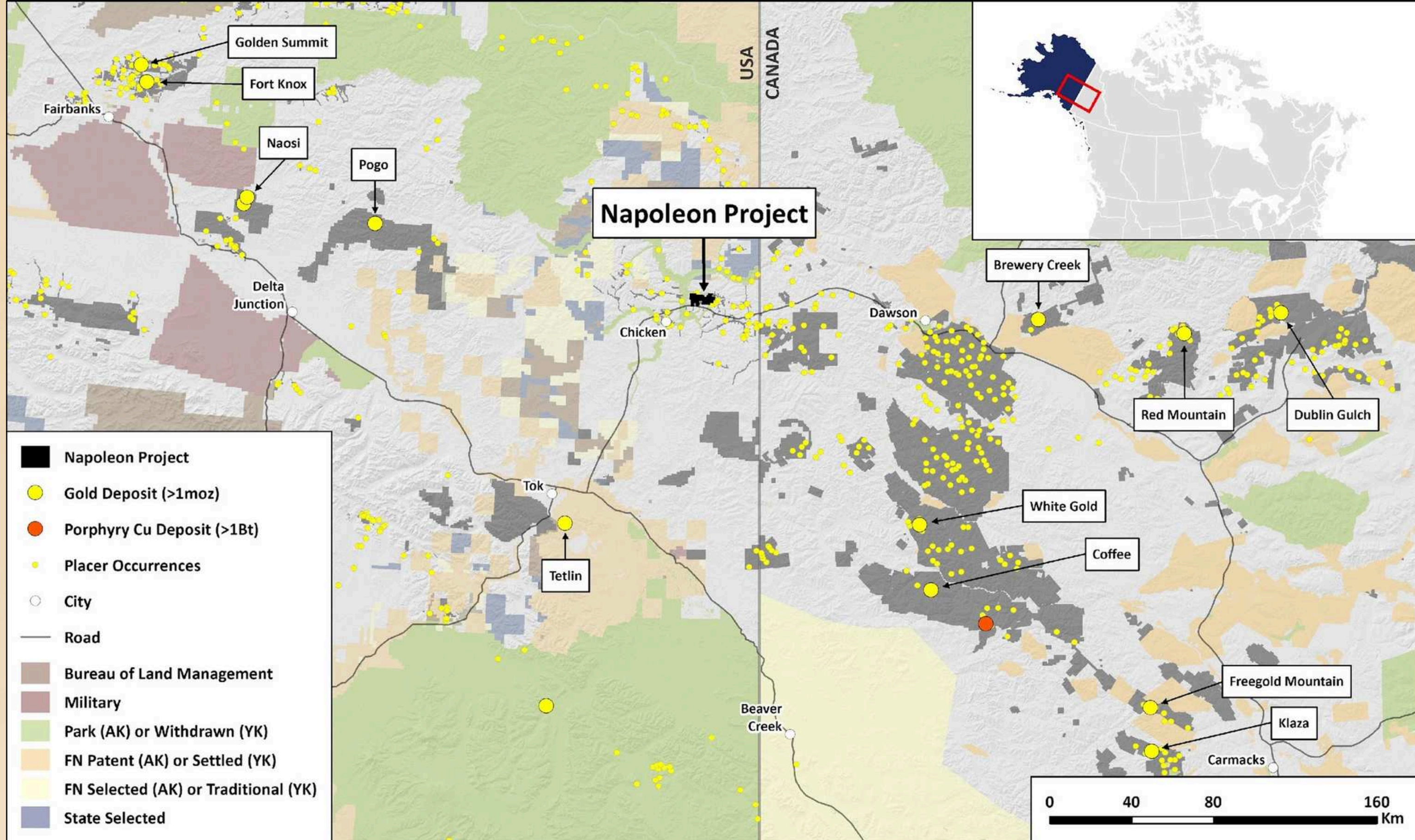
Napoleon Project



**Deposit Type:** Orogenic / Intrusion-related Gold  
**Size:** 5,925 ha | **Stage:** Phase-II Drilling | **Ownership:** 100% J2 Metals

- **Located near Chicken, Alaska**, within the prolific **Tintina Gold Province** (>30 Moz Au produced).
- Lies in the **Fortymile Region** (≈500 koz historic placer Au in surrounding waterway). J2 holds the high ground above this gold and the only known potential hard rock source.
- **High-grade surface sample: 593 g/t Au**. Historic drilling by Teck and Kennecott intersected up to 8.9 g/t Au over 3 m.
- **Fresh high resolutions geophysics and undrilled key area highlight strong discovery potential.**
- **Kenorland holds a 1% NSR on Napoleon and Kennecott and Millrock Alaska each hold a 0.5% NSR**

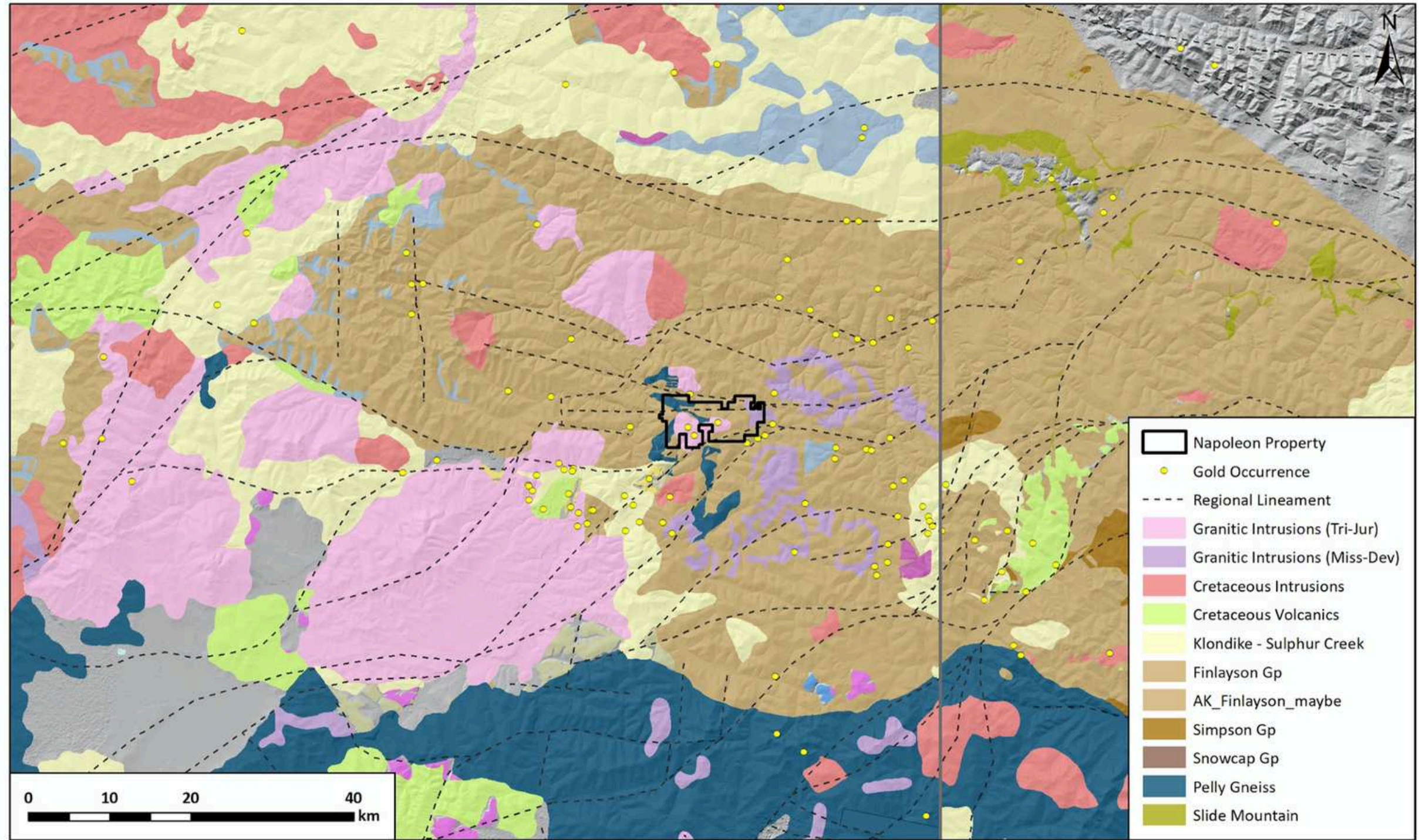
# NAPOLEON PROJECT



# Napoleon Project - Regional Geology



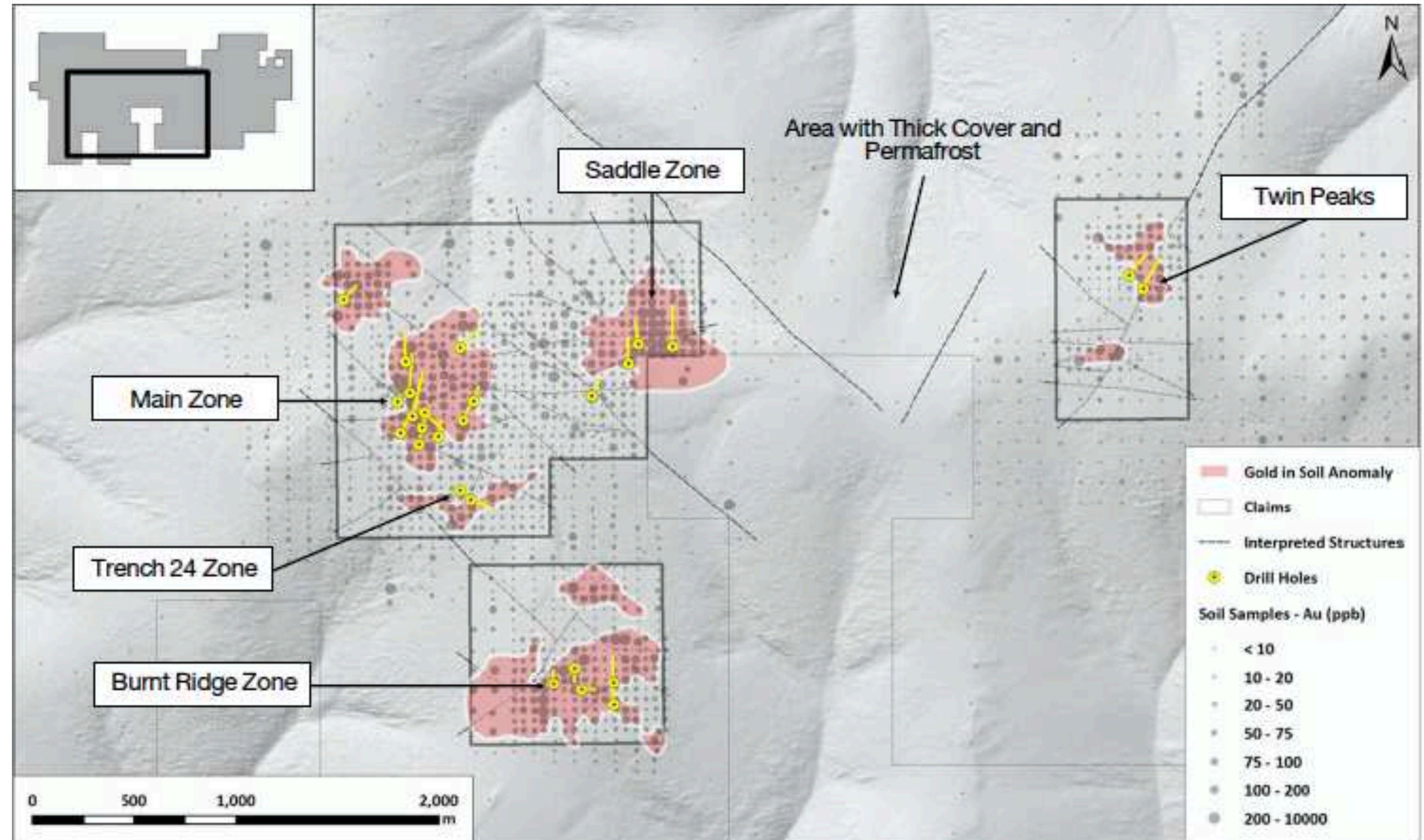
- The project is located in the **Yukon–Tanana terrane (YTT)**, a region of **metamorphic rocks of Upper Paleozoic and older ages** that were deposited or emplaced near the edge of the North American continental margin.
- The YTT was then **intruded by multiple phases of granitoid igneous rocks during the Mesozoic and Cenozoic**.
- The **terrane is bound in the northeast by the Tintina Fault** and in the **southwest by the Denali Fault**.
- The local geology of the Fortymile district is defined by a series of **major east–west trending faults**, and Jurassic-aged plutons intruded into the metamorphic rocks of the Klondike assemblage.



# Napoleon Project - Target Areas



- At least **five target areas** can be distinguished on the **Napoleon Property (Main Zone, Saddle Zone, Trench 24 Zone, Burnt Ridge, and Twin Peaks)**.
- The **Main Zone** has been the **focus of most of the trenching and drilling to date**.
- The **Saddle Zone** has **produced the best drill results** and the **most robust gold-in-soil anomaly**.
- Much of the **property at lower elevations** is covered with **thick residual soil and permafrost**, where **conventional soil geochemistry is less effective**.



# NAPOLEON PROJECT

## Historic Drilling

- Mineralization at **Napoleon is characterized by high grade gold within quartz-pyrite veins, with K-feldspar-sericite-pyrite altered selvages.**
- **Gold mineralization is controlled by east-west and northwest shear zones, commonly associated with kaolinite-quartz-carbonate alteration.**
- From **1998 to 2002, 27 holes were drilled** into prospective targets that were identified by soil sampling and surface mapping.
- **Future drilling is recommended to test the main and saddle zones at depth as well as the Twin Peaks area.**

Drill Hole	From (m)	To (m)	Width (m)	Gold (g/t)	
NAP 3	15.24	15.85	0.61	16	
NAP 3	27.43	28.96	1.53	2	
NAP 3	35.05	35.66	0.61	38	
NAP 3	39.62	41.15	1.53	1.1	
NAP 4	12.98	14.63	1.65	3.9	
NAP 4	110.03	110.64	0.61	5.6	
NAP 5	21.18	21.95	0.77	7	
NRC	12.19	13.72	1.53	3.6	
NRC 4	9.14	18.29	9.05	3.1	
NRC 7	30.48	33.53	3.05	1.9	
NP-10	47.6	121.6	74	0.9	
<b>Including</b>	<b>53.4</b>	<b>54.3</b>	<b>0.9</b>	<b>23</b>	
NP 1	71.5	72.5	1	4.7	
NP 2	144	147	3	8.9	
NP 3	15.6	21.3	1.2	8.2	

**A. Fault Brecciated Monzonite**



**B. Quartz vein with visible gold**

# BOARD AND MANAGEMENT



**Thomas Lamb**  
CEO and Director

Mr. Lamb is CEO of Myriad Uranium and is a board member of Sasquatch Resources. He co-founded and was a director of M2 Cobalt Corp., which sold to Australia's Jervois Global. He co-founded Goldgroup Mining Inc. and is a former director of Uzhuralzoloto, at the time Russia's second-largest gold producer. Mr. Lamb has founded and helped lead several other private and public companies. He holds an MSc from London Business School and also holds JD and BA degrees. Early in his career he was a securities lawyer.



**Toby Pierce**  
Director

CEO & Director of Somerset Energy, a growth-focused oil company pursuing conventional and resource plays in South Texas. Brings 29 years in the resource sector with deep geological and financial expertise in mineral exploration. Former founder, CEO, or director of numerous private and public companies, including Benchmark Metals, New Placer Dome Gold, Gold Line Resources, Crest Petroleum, North Country Gold, Brilliant Resources, Red Tail Metals, and Kingfisher Metals, plus multiple Canadian and London shell companies. MBA (Rotman); BSc, Earth Sciences (University of Victoria).



**Simon Clarke**  
Director

Simon Clarke has nearly 30 years of experience in the resource sector, with a focus on critical minerals, energy, and precious metals. Currently CEO, President, and Director of American Critical Minerals Corp., and Executive Chair and Director of Myriad Uranium Corp. Clarke previously served as CEO and Director of American Lithium Corp., where the company reached a market capitalization of approximately \$1.2 billion, and was the original CEO of Apollo Silver Corp. He also co-founded M2 Cobalt Corp. (acquired by Jervois Global) and Osum Oil Sands Corp. (acquired by Waterous Energy Fund). Clarke holds an LLB and Diploma in Legal Practice from Aberdeen University, Scotland.



**Chris Beltgens**  
Director

Over 10 years of experience in investment, business development, and corporate finance. Since March 2021, he has been the President of Somerset Energy, a growing innovative oil company chasing both conventional and resource plays in South Texas. Director at Kingfisher Metals Inc. and previously served as Corporate Development Manager at East West Petroleum (TSXV: EW). Earlier, he spent six years in London investment banking, raising capital for international oil & gas companies. Mr. Beltgens has completed the CFA program and holds an MBA from the University of Toronto and a BSc from the University of Victoria.

# BOARD AND MANAGEMENT



**Steven Gold**  
Director

Steven Gold has more than 25 years of C-suite and capital markets experience in the natural resource sector and has held various positions across the investment industry, both on the buy and sell sides. More recently, he has held senior officer roles at various junior and mid-level mining companies in the global mining sector with a focus on Latin America. Mr. Gold currently serves as President, CEO, and Director of Jaguar Uranium Corp. (NYSE American: JAGU), and received his Bachelor's degree in Industrial Relations from McGill University in 2001 and his CFA designation from CFA Institute in 2006.



**Graham Giles**  
VP of Exploration

Mr. Giles is currently VP Exploration of J2 and was a Senior Project Geologist with Argonaut Gold from April 2019 to December 2023. He has more than 15 years of experience as an exploration geologist, GIS and data manager with companies such as Skeena Resources, Keegan Resources, Brett Resources, and several consulting companies. Mr. Giles holds a BSc in Earth and Environmental Science from UBC and an MSc in Mineral Economics from Curtin Graduate School of Business. He is a registered Professional Geoscientist in the Province of British Columbia.



**Ivan Riabov**  
CFO

Mr. Riabov is a seasoned finance and accounting professional who began his career in 2008 and brings over 17 years of progressive work experience in public accounting, audit, investment management, portfolio management, operations, product structuring and debt financing. Mr. Riabov obtained his BBA degree from Schulich School of Business (York University) and holds the Chartered Professional Accountant and Chartered Accountant designations.



**Pino Perone**  
Corporate Secretary

Mr. Perone is a lawyer by background and has extensive corporate experience that stems from practicing as corporate counsel, as well as serving as an executive and director, for various public and private companies in the resource and technology sectors. Mr. Perone has served as Corporate Secretary of J2 since April 2020. Mr. Perone holds a B.A. from the University of Victoria and an LL.B. from the University of Alberta and has been a member in good standing of the Law Society of British Columbia since 2006.



**Carlos Cham Dominguez**  
Mexico Country Manager

Sr. Cham brings more than two decades of geological expertise across Mexico, including nearly 20 years of focused experience in the Taxco epithermal district working with Impact Silver, Pantera and other regional operators. His extensive tenure in the district has given him an exceptional depth of knowledge of Sierra Plata's geology and its relationship within the broader mineralized system. Sr. Cham is a member of the American Institute of Professional Geologists and holds the designation of Certified Professional Geologist (CPG #1176).



**Thank you  
For more information,  
please contact:**

**Thomas Lamb CEO**

+1 604 418 2877

[tlamb@j2metals.ca](mailto:tlamb@j2metals.ca)

**Graham Giles VP Exploration**

+1 778 879 9751

[ggiles@j2metals.ca](mailto:ggiles@j2metals.ca)